

Construction Details

SOUND AND PRIVACY

We've ensured the walls and floors of your home exceed the performance requirements set out by the city's building requirements so you can spend quality time at home undisturbed. Exterior walls feature insulation while party walls have three layers of Gypsum wall board to ensure spaces for peace and quiet.

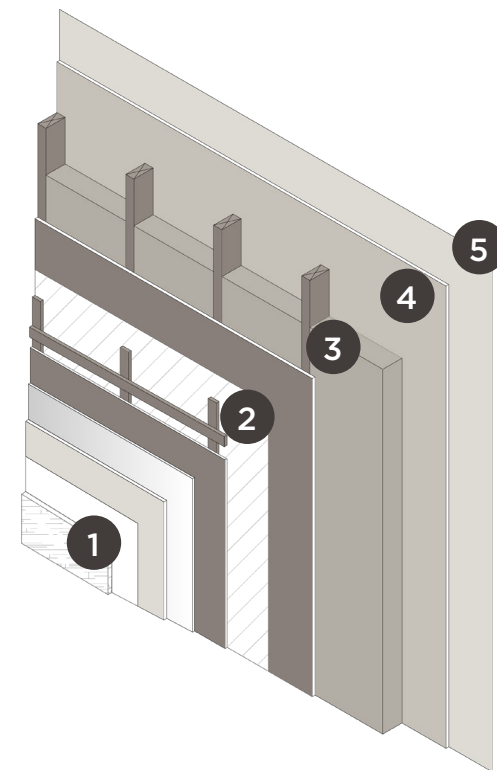
ENDURING MATERIALS

An Alabaster home is built to last. The materials of the structure and exteriors of your home were chosen to keep in mind the demands of natural elements including sun, rain, and of course, time. Homes are built with commercial weather barriers and finished with durable, non-combustible cladding.

ENERGY EFFICIENT

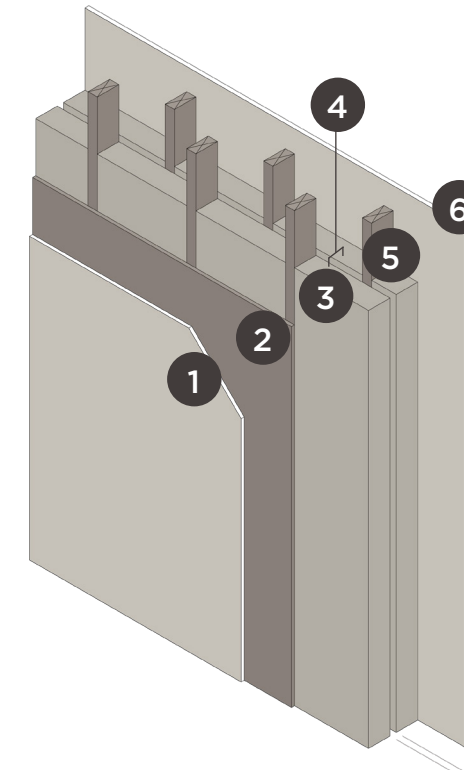
Energy-efficient homes keep interior temperatures consistent, reduce allergens and much more - benefiting both you and the environment. This is why your home is built to comply with the National Energy Code for Canada.

EXTERIOR WALLS



1. Durable, non-combustible exterior cladding
2. Commercial weather barrier
3. 2x6" studs with batt insulation
4. Air and vapour barrier
5. 5/8" Premium Gypsum wall board

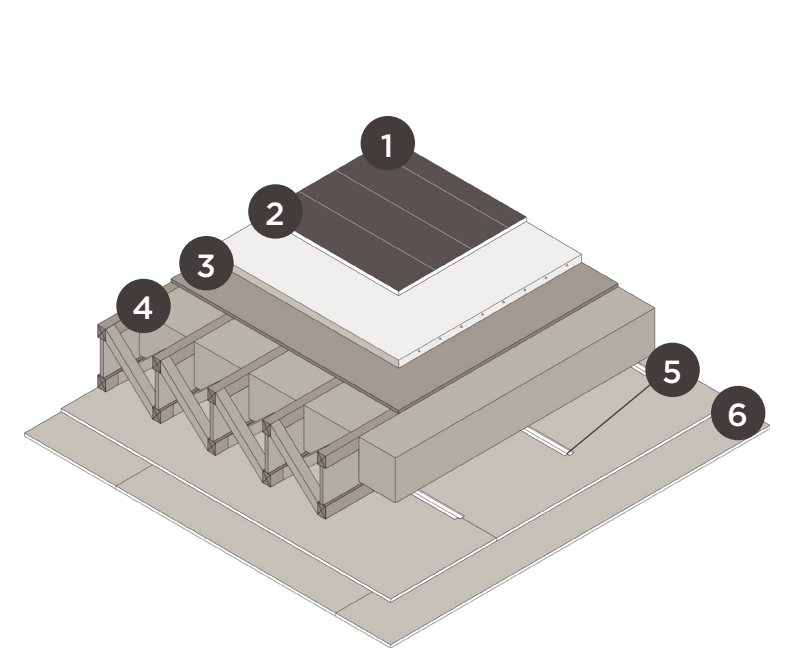
PARTY WALLS



1. 1/2" layer of Gypsum wall board
2. 5/8" Premium Gypsum wall board
3. 2x4" studs with batt insulation
4. 1" air space
5. 2x4" studs with batt insulation
6. 5/8" Premium Gypsum wall board

**Features higher than VVBL Standard, 57+ STC Rating*

FLOOR B/W STACKED UNITS



1. Finished engineered hardwood flooring
2. 1 1/2" regular weight concrete topping
3. 5/8" plywood subflooring
4. 9 1/2" cross-bridging wood joists with R32 mineral wool insulation
5. 1/2" resilient furring
6. 2 layers of 5/8" Premium Gypsum wall board

**Features higher than VVBL Standard, 57+ STC Rating*